



## MEDICAL WARMER

# MINUS40

# NEW MW130GHD



### MW130GHD Medical Warmer

**Class 1**

The range was purposefully designed for modern hospitals with accurate temperature control and energy efficiency. Medical warmers are manufactured with the latest technology for storage and warming of surgical irrigation solutions and sterile intravenous fluids (IV fluids) along with linens.

Minus40's Medical units are backed by the reputable and reliable Minus40 service warranty. An optional annual service agreement can be specified.

#### Temperature Control

Chamber Capacity (Liters)	130
Temperature range	30°C to 42°C (Min of 5°C above ambient)
Temperature Control	± 0.1°C

#### Dimensions

External (HxWxD)	1000x550x550
Internal (HxWxD)	750x450x400
Shelves	3

#### Power Supply

Voltage (AC)	220V / 50HZ
Rated Power Supply (Amps)	1.1Amp

#### Features

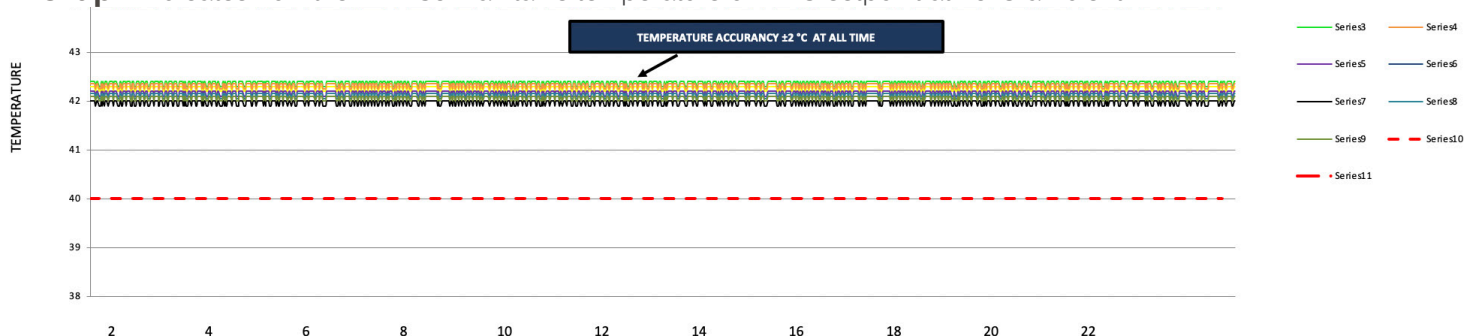
- ✳ Temperature set points
- ✳ Temperature validation
- ✳ High temperature safety shut-off
- ✳ Low Operating Sound Level
- ✳ Digital Temperature Control
- ✳ Internal Light (LED)
- ✳ External Light Switch
- ✳ Even Temperature Distribution
- ✳ High/Low Temperature Alarm
- ✳ Energy efficient
- ✳ Target Set Temperature Displayed (SV)
- ✳ Process Temperature Displayed (P.V) (Actual)



#### Specifications

- All warmers come with a LED readout for temperature confirmation at all times.
- The device is made up of superior quality material which ensures product longevity.
- The integral shelves with adjustments provide flexibility in storage and arrangement of objects.
- Quality approved heating provides consistent and effective transfer of heat.
- Transparent glass door enhances useability.
- The unit comes standard with four durable wheels for mobility and ease-of-use.

**Graph** indicates how the MW130 maintains temperature of 42°C setpoint at 10°C ambient



**"If it doesn't say MINUS40- It's not a MINUS40"**

[www.minus40.co.za](http://www.minus40.co.za)



## MINUS40

### Superior Design



The Medical Warmers are manufactured from 304 stainless steel for easy cleaning. This gives the warming cabinet exceptional corrosion resistance.

The casing has injected high-density polyurethane foam which acts as an insulant.

The glass door allows a clear view of the chamber contents without disturbing the internal atmosphere. The door has a rubber gasket providing a reliable seal.

## NEW MW130GHD

### Heating

Heating elements and high-performance insulation ensure optimum temperature control. All models have fan-assisted air circulation that ensures even temperature distribution throughout the chamber. Fast temperature recovery keeps heat loss to a minimum after door opening.

### Temperature Control

The latest in microprocessor temperature controller technology gives the unit excellent temperature stability to within 0.1°C. Fuzzy Logic and Auto-Tune features allow the controller to adapt to each chamber size, optimising their performance and accuracy. The controller is user friendly, with target and actual temperatures being displayed in real-time on a digital display.

### Safety

Over and under temperature alarm thresholds are programmed into the controller. An independent safety cut out disconnects the heating elements should an over-temperature condition occur. The controller is password-protected, stopping any unauthorised adjustments to the parameters and alarm thresholds.

### Key features

All Minus40 Medical Warmers include;

- Energy efficient
- Accurate temperature control
- Fan assisted air circulation
- All stainless steel construction
- Fast recovery time

### Maintenance

This unit is backed by the reputable Minus40 service warranty with maintenance options that will ensure extended longevity of the Medical Fridge.

### Additional

All Minus40 product comes with

- Operating and installation manual
- Voltage protector

